

CDP 380 WP 203	CDP 360 WP 193	CDP 340 WP 183	CDP 320 WP 172	CDP 300 WP 165	CDP 280 WP 152	CDP 260 WP 142	CDP 240 WP 131	CDP 220 WP 121	CDP 200 WP 111	CDP 180 WP 101	CDP 160 WP 91	CDP 140 WP 79	CDP 120 WP 71	CDP 100 WP 61	CDP 80 WP 51	CDP 60 WP 41	CDP 40 WP 30	CDP 20 WP 21
0.008 1521	0.015 1563	0.022 1664	0.004 1656	0.022 1610	0.004 1586	0.015 1591	0.004 1693	0.022 1712	0.015 1721	0.008 1730	0.015 1768	0.008 1798	0.015 1730	0.008 1730	0.004 1730	0.004 1726	0.008 1730	0.015 1749
0.079 1539	0.108 1596	0.158 1707	0.065 1679	0.136 1624	0.158 1633	0.187 1637	0.194 1712	0.227 1728	0.185 1749	0.165 1763	0.158 1814	0.158 1833	0.108 1805	0.108 1777	0.165 1805	0.115 1782	0.129 1786	0.122 1796
0.194 1664	0.201 1693	0.323 1783	0.172 1707	0.323 1749	0.394 1823	0.337 1712	0.308 1735	0.451 1772	0.294 1763	0.383 1809	0.315 1865	0.287 1930	0.244 1884	0.215 1819	0.358 1926	0.265 1898	0.251 1879	0.251 1912
0.344 1785	0.315 1805	0.573 1888	0.358 1786	0.485 1823	0.485 1823	0.552 1796	0.501 1786	0.623 1805	0.444 1800	0.552 1847	0.494 1940	0.509 2033	0.408 1930	0.373 1885	0.559 2065	0.373 2033	0.387 2033	0.408 2065
0.487 1891	0.480 1912	0.881 1940	0.509 1837	0.723 1884	0.981 1935	0.852 1884	0.730 1851	0.773 1870	0.623 1861	0.759 1981	0.680 2028	0.730 2112	0.602 1981	0.559 1940	0.730 2200	0.566 2209	0.609 2242	0.559 2186
0.709 1975	0.659 1963	1.198 2019	0.868 1879	0.967 1930	1.332 2009	1.081 1977	0.902 1921	0.967 1986	0.795 1958	0.931 2088	0.902 2163	0.938 2223	0.802 2084	0.745 2060	0.917 2386	0.702 2311	0.788 2377	0.746 2307
0.974 2037	0.866 2005	1.539 2158	1.146 1940	1.260 1967	1.604 2149	1.425 2093	1.124 2000	1.160 2112	0.974 2070	1.053 2195	1.138 2279	1.303 2432	0.988 2228	0.895 2195	1.131 2625	0.849 2418	0.995 2497	0.981 2414
1.224 2107	1.231 2107	1.833 2307	1.396 2014	1.561 2070	1.926 2414	1.747 2288	1.396 2084	1.296 2242	1.153 2218	1.274 2409	1.317 2395	1.587 2899	1.174 2414	1.080 2423	1.432 2950	1.081 2620	1.231 2718	1.310 2699
1.446 2172	1.532 2223	2.127 2351	1.589 2126	1.933 2339	2.259 2764	1.983 2488	1.618 2223	1.460 2381	1.382 2456	1.489 2616	1.568 2848	1.876 3121	1.375 2643	1.287 2718	1.783 3358	1.310 2923	1.489 2997	1.310 2923
1.711 2293	1.847 2367	2.541 2498	1.868 2284	2.291 2699	2.641 3201	2.434 3065	1.818 2290	1.647 2523	1.639 2784	1.768 2941	1.775 2848	2.253 3895	1.632 3037	1.479 3009	2.226 3779	1.682 3288	1.840 3344	2.377 3723
1.997 2541	2.047 2488	3.436 3816	2.054 2474	2.699 3201	3.057 3635	2.828 3427	2.026 2653	1.883 2802	1.847 2978	2.083 3218	2.090 3232	2.749 4049	1.749 3469	1.682 3302	2.699 4119	2.183 3705	2.269 3686	3.013 4188
2.312 2978	2.326 2774	4.436 4793	2.269 2681	3.357 3635	3.965 4328	3.772 4258	2.427 3135	2.140 3093	2.062 3176	2.448 3742	2.470 3867	3.436 4421	2.276 3798	1.904 3525	3.393 4491	2.706 4072	2.763 3983	3.994 4653
3.023 4119	3.493 3835	5.000 4859	3.443 3833	4.000 4888	4.989 4909	5.000 4909	3.013 3742	2.598 3525	2.462 3567	3.321 4188	3.035 4142	4.989 5000	2.756 4142	2.412 3946	3.994 4723	3.328 4598	3.343 4274	5.000 5000
5.000 4723	4.996 4746	5.000 4859	5.000 4859	5.000 4888	4.989 4909	5.000 4909	4.989 4932	4.001 4491	3.393 4235	5.000 4979	5.000 4979	5.000 4979	5.000 5000	5.000 5000	5.000 5000	5.000 5000	5.000 5000	5.000 5000

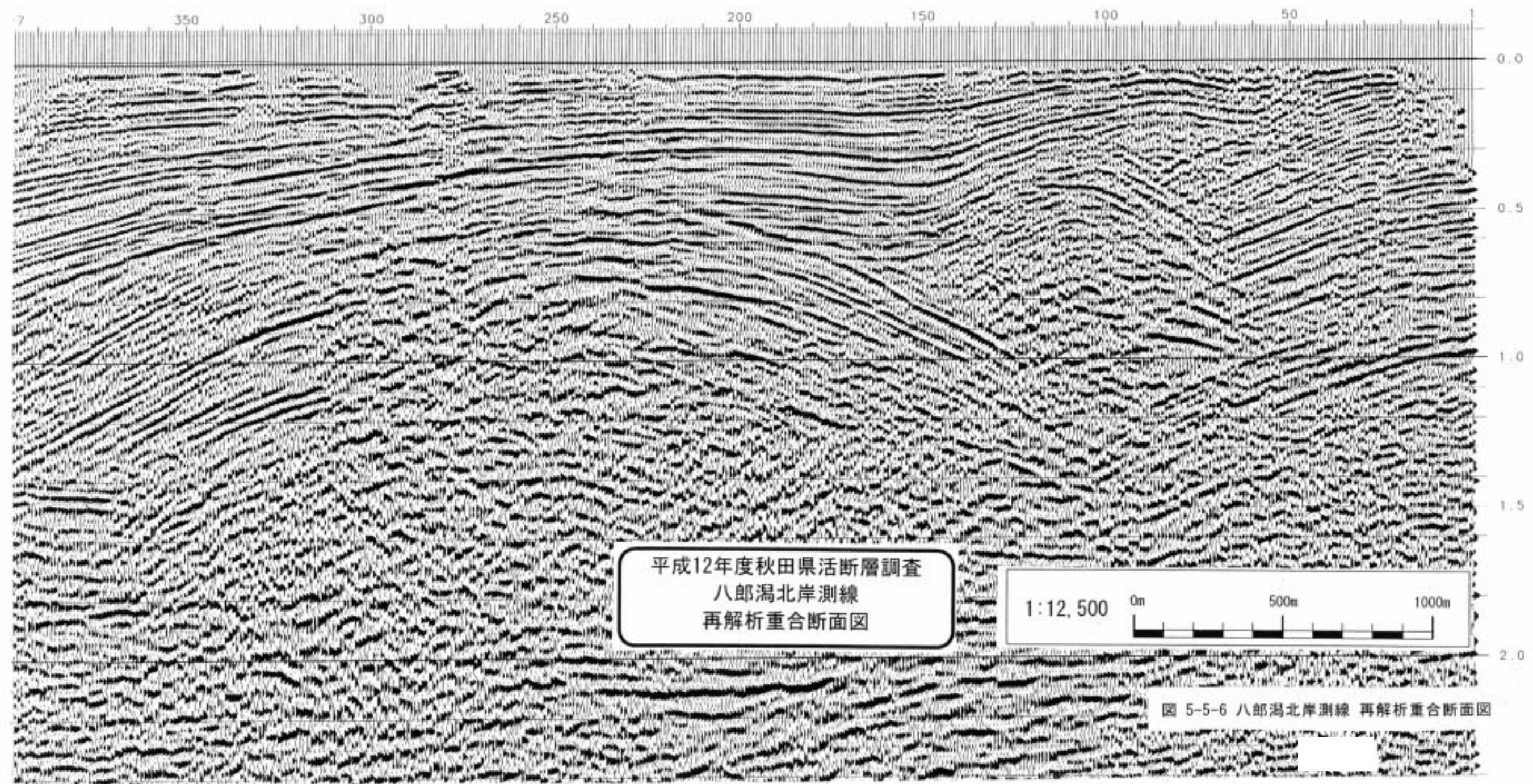


図 5-5-6 八郎湯北岸測線 再解析重合断面図