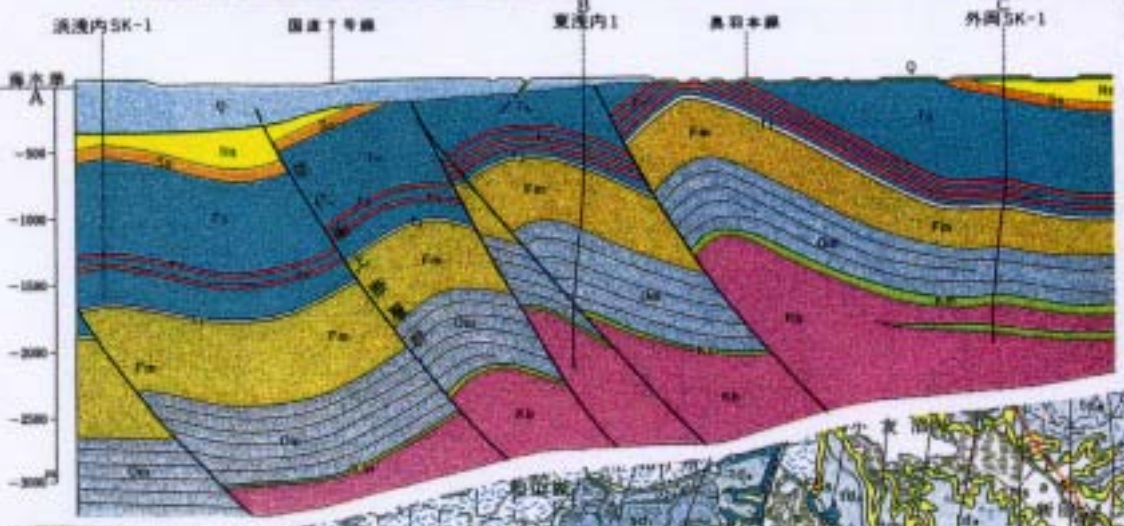
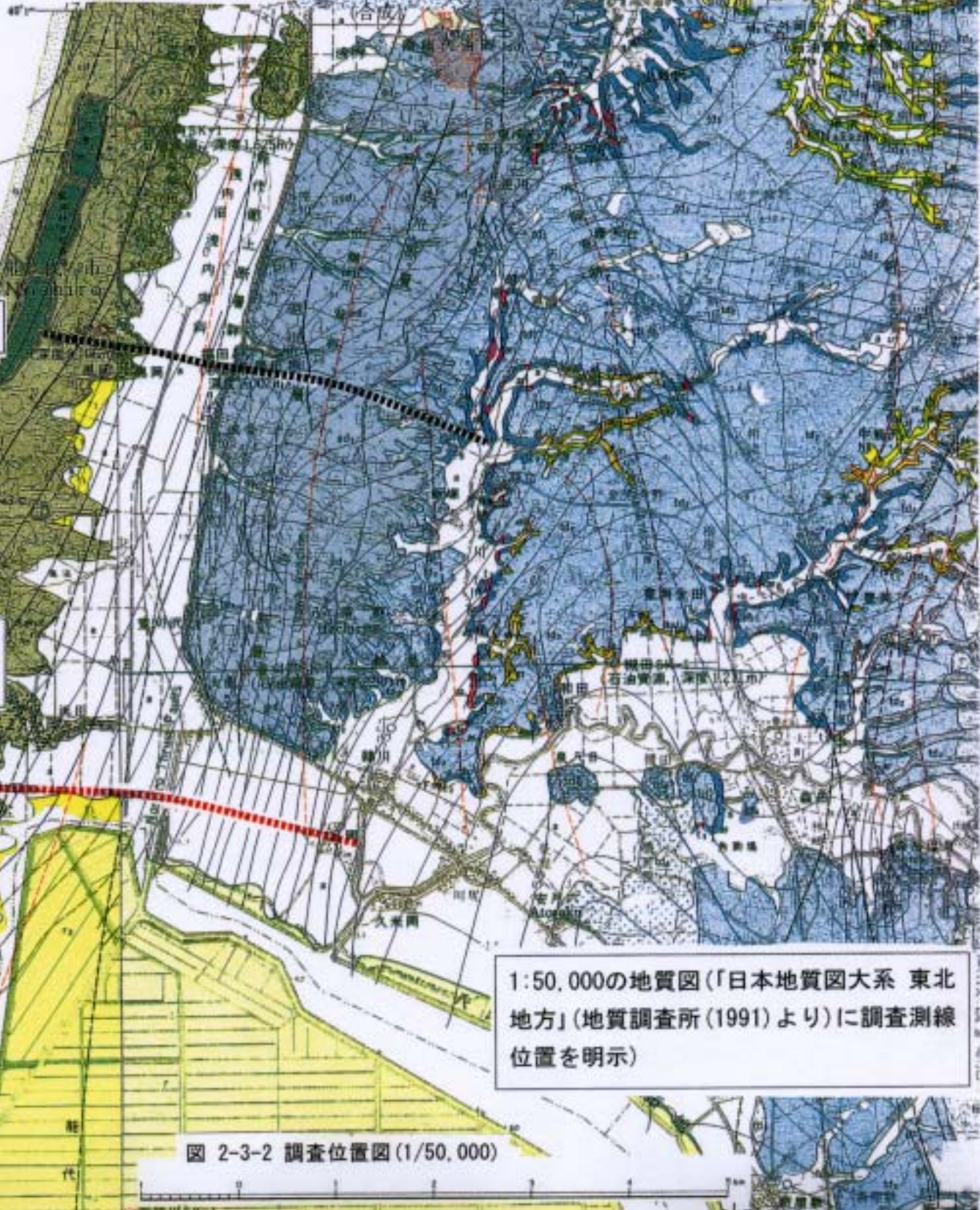


- シルト岩(砂岩・礫岩・酸性凝灰岩及び砂質凝灰岩を伴う)
Siltstone (with sandstone, conglomerate, acid tuff and sandy tuff)
 - 酸性凝灰岩及び砂質凝灰岩
Acid tuff and sandy tuff
 - 酸性凝灰岩及び酸性凝灰岩—中粒凝灰岩(火山凝灰岩・暗灰色泥岩及び暗灰色泥岩を伴う)
Acid pumice tuff and acid fine to medium tuff (with lapilli tuff, dark grey mudstone and tuff breccia)
 - 暗灰色泥岩(砂岩・酸性凝灰岩及び砂質凝灰岩を伴う)
Dark grey mudstone (with sandstone, acid tuff and sandy tuff)
 - 酸性凝灰岩及び酸性凝灰岩—中粒凝灰岩(火山凝灰岩・暗灰色泥岩及び暗灰色泥岩を伴う)
Acid pumice tuff and acid fine to medium tuff (with lapilli tuff, tuff breccia and dark grey mudstone)
 - 斜長石流紋岩
Plagioclase rhyolite lava
 - (角閃石)超熱帯超輝石山岩流紋岩及び超熱帯超輝石山岩(輝石内角閃石山岩流紋岩・角閃石サイキ)超熱帯超輝石山岩
(Hornblende-) hyperthene-aegite andesite lava and its pyroclastic rock (with pyroxene-hornblende andesite lava, hornblende dacite lava and their pyroclastic rocks)
 - 輝石かんらん石ドolerite及び(輝石かんらん石)かんらん石玄武岩
Augite-olivine dolerite and (augite-)olivine basalt
 - 硬質泥岩(酸性凝灰岩及び砂岩を伴う)
Hard mudstone (with acid tuff and sandstone)
 - 輝石かんらん石ドolerite及び(輝石かんらん石)かんらん石玄武岩
Augite-olivine dolerite and (augite-)olivine basalt
 - (輝石かんらん石)かんらん石玄武岩流紋岩(輝石かんらん石)かんらん石玄武岩・硬質泥岩及び砂岩を伴う
(Augite-)olivine basalt pyroclastic rock (with its lava, acid pyroclastic rock, mudstone and sandstone)
 - 流紋岩流紋岩(サイキ)流紋岩を伴う
Rhyolite lava (with dacite lava)
 - 酸性火砕岩(角閃石流紋岩・流紋岩・砂岩及び礫岩を伴う)
Acid pyroclastic rock (with andesite pyroclastic rock, mudstone, sandstone and conglomerate)
- ※ 断面図にのみ表示される
* Shown only in cross section



「森岳」図幅の凡例

- 泥・砂及び礫(泥岩を伴う)
Mud, sand and gravel (with silt)
 - 砂
Sand
 - 礫(砂及び泥を伴う)
Gravel (with sand and mud)
 - 泥及び礫(砂を伴う)
Mud and gravel (with sand)
 - 砂(泥及び礫を伴う)
Sand (with mud and gravel)
 - 礫・砂及び泥(泥岩を伴う)
Gravel, sand and mud (with lignite)
 - 砂(礫及び泥を伴う)
Sand (with gravel and mud)
 - 砂岩(酸性凝灰岩・シルト岩及び礫岩を伴う)
Sandstone (with acid tuff, siltstone and conglomerate)
 - 砂岩(シルト岩を伴う)
Sandstone (with siltstone)
 - シルト岩(砂岩・酸性凝灰岩及び砂質凝灰岩を伴う)
Siltstone (with sandstone, acid tuff and sandy tuff)
 - 酸性凝灰岩及び砂質凝灰岩
Acid tuff and sandy tuff
 - 酸性凝灰岩及び酸性凝灰岩—中粒凝灰岩(AI)
Acid pumice tuff and acid fine to medium (with lapilli tuff, dark grey mudstone or
 - 暗灰色泥岩(砂岩・酸性凝灰岩及び砂質凝灰岩を伴う)
Dark grey mudstone (with sandstone, acid tuff and sandy tuff)
 - 酸性凝灰岩及び酸性凝灰岩—中粒凝灰岩
Acid pumice tuff and acid fine to medium (with lapilli tuff, dark grey mudstone)
 - 角閃石(サイキ)流紋岩
Hornblende dacite lava
 - 超熱帯超輝石山岩流紋岩内角閃石山岩
Hyperthene-aegite-hornblende
 - 硬質泥岩(酸性凝灰岩及び砂岩を伴う)
Hard mudstone (with
 - かんらん石輝石山岩
Olivine-gyrogonite
 - 玄武岩流紋岩及び
Basalt lava and
 - 泥岩及び砂岩
Mudstone
- ※ 地質断面図にのみ表示される
* Shown only in



1:50,000の地質図(「日本地質図大系 東北地方」(地質調査所(1991)より)に調査測線位置を明示)

図 2-3-2 調査位置図(1/50,000)