

# CALIBRATION OF RADIOCARBON AGE TO CALENDAR YEARS

(Variables: C13/C12=-25.1:lab. mult=1)

Laboratory number: **Beta-163328**

Conventional radiocarbon age: **350±60 BP**

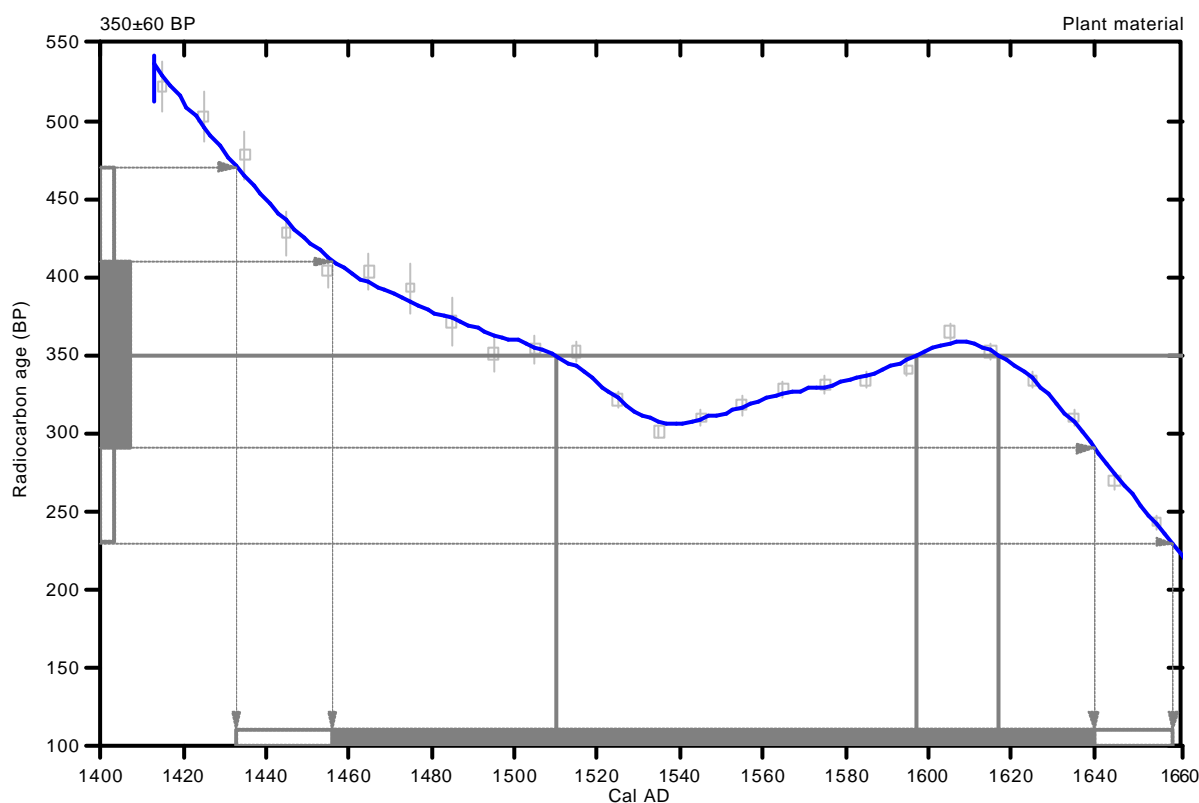
**2 Sigma calibrated result: Cal AD 1430 to 1660 (Cal BP 520 to 290)**  
(95% probability)

Intercept data

Intercepts of radiocarbon age

with calibration curve: Cal AD 1510 (Cal BP 440) and  
Cal AD 1600 (Cal BP 350) and  
Cal AD 1620 (Cal BP 330)

**1 Sigma calibrated result: Cal AD 1460 to 1640 (Cal BP 490 to 310)**  
(68% probability)



## References:

*Database used*

*Calibration Database*

*Editorial Comment*

*Stuiver, M., van der Plicht, H., 1998, Radiocarbon 40(3), pxi-xiii*

*INTCAL98 Radiocarbon Age Calibration*

*Stuiver, M., et. al., 1998, Radiocarbon 40(3), p1041-1083*

*Mathematics*

*A Simplified Approach to Calibrating C14 Dates*

*Talma, A. S., Vogel, J. C., 1993, Radiocarbon 35(2), p317-322*

**Beta Analytic Inc.**

4985 SW 74 Court, Miami, Florida 33155 USA • Tel: (305) 667 5167 • Fax: (305) 663 0964 • E-Mail: beta@radiocarbon.com